

## Health and Wellbeing Board Briefing: St. Andrews Parade Pharmacy Closure and response to new pharmacy application

February 14<sup>th</sup>, 2024

### Executive summary

Boots Pharmacy, 16 St Andrews Parade, Weston-super-Mare, BS23 3SS has given notice to NHS England that it intends to close on 24<sup>th</sup> February 2024. In response to the notification this briefing report is to inform members of the Health and Wellbeing Board (H&WB) on:

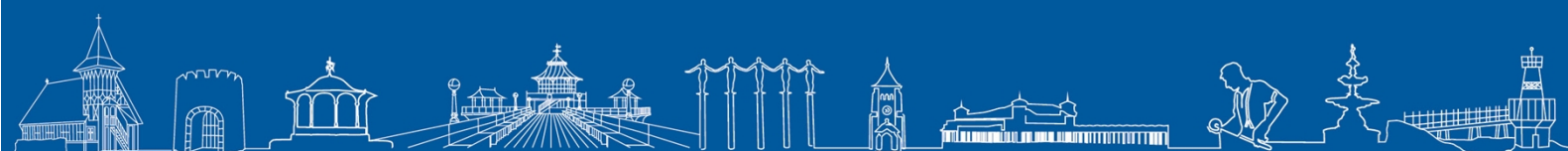
1. A decision to issue a supplementary statement to the pharmaceutical needs assessment following the closure of Boots Pharmacy on St. Andrews Parade, Weston-super-Mare to assist decision making on a new pharmacy application.
2. A decision to issue a H&WB response to the application to open a new pharmacy on St. Andrews Parade.

The report provides details of the pharmacy closure, a brief overview of pharmaceutical needs assessment and regulation of pharmacy services, including the role of the Health and Wellbeing Board in this process and informing their decision to issue a PNA supplementary statement, and response to the current application for a new pharmacy on the same site.

The report provides a summary of the current North Somerset PNA, data and information on population health and wellbeing needs, access to pharmacy provision and pharmacy use on Bournville Estate, and details of alternative pharmacy provision.

Based on the summary of relevant information it is recommended that:

1. The Health and Wellbeing Board, support the decision to issue a supplementary statement to the pharmaceutical needs assessment following the closure of Boots Pharmacy on St. Andrews Parade, Weston-super-Mare.
2. The Health and Wellbeing Board issue a supportive response to the application to open a new pharmacy on St. Andrews Parade and delegates the final draft of a letter to the Health and Wellbeing Board Chair with support from the Director of Public Health and Regulatory Services.



## Purpose

This briefing report is to inform members of the Health and Wellbeing Board (H&WB) on:

- 1 Decision to issue a supplementary statement to the pharmaceutical needs assessment following the closure of Boots Pharmacy on St. Andrews Parade, Weston-super-Mare.
- 2 Decision to issue a H&WB response to the application to open a new pharmacy on St. Andrews Parade.

## About the closure of Boots Pharmacy, St. Andrews Parade

### Notice of pharmacy closure and Pharmacy services

Boots Pharmacy, 16 St Andrews Parade, Weston-super-Mare, BS23 3SS has given notice to NHS England that it intends to close on 24<sup>th</sup> February 2024.

The pharmacy provides the following pharmaceutical services:

- Essential services including dispensing prescriptions.
- Community Pharmacy Consultation Service (CPCS).
- New Medicines Service.
- Seasonal influenza vaccination.
- Hypertension case-finding.
- Primary Care Public health services.
- Other locally commissioned services.

These services were provided at the following times:

Day	Monday to Friday	Saturday	Sunday
Time	09:00-18:00	09:00-13:00	Closed

## Pharmaceutical Needs Assessment (PNA) and regulation of pharmacy provision

### North Somerset's PNA

The PNA is a statutory duty of the H&WB<sup>1</sup>. The H&WB is required to assess the need for pharmaceutical services in its area and to publish a statement of its assessment every three years, this is termed a 'pharmaceutical needs assessment'. Regulations<sup>2</sup> set out the minimum information that must be contained within a PNA and outlines the process that must be followed in its development. Guidance is available to support this process<sup>3</sup>. The current PNA for North Somerset is available

<sup>1</sup> Section 128A of the National Health Service Act 2006 (NHS Act 2006)

<sup>2</sup> NHS (2013) NHS (Pharmaceutical Services and Local Pharmaceutical Services) Regulations 2013, as amended (the 2013 regulations). Online: <https://www.legislation.gov.uk/uksi/2013/349/contents/made>

<sup>3</sup> DHSC (2023 and 2021) Pharmaceutical needs assessments: information pack. Online: <https://www.gov.uk/government/publications/pharmaceutical-needs-assessments-information-pack>

on the [North Somerset Council Website](#)<sup>4</sup>. The drafting of the PNA is delegated from the H&WB to the PNA Steering group that includes representation across the board membership<sup>5</sup>.

### Regulation of pharmacy applications and H&WB's

The 2013 regulations set out the arrangements for pharmaceutical applications<sup>2</sup>. NHS England are responsible for decisions on the opening of new pharmacies. Applications for new, additional or relocated premises are made by the local NHS England Area Team. Most routine applications for a new pharmacy will be assessed against the PNA for the area.

North Somerset's H&WB / PNA steering group can issue a PNA supplementary statement in accordance with regulatory requirements<sup>1,2,3</sup>. A supplementary statement can be published to explain changes to the availability of pharmaceutical services where:

- (a) the changes are relevant to the granting of an application or applications for inclusion in the pharmaceutical list for the area of North Somerset's health and wellbeing board's area; and*
- (b) North Somerset's health and wellbeing board is satisfied that producing a new pharmaceutical needs assessment would be a disproportionate response to those changes or it is already producing its next pharmaceutical needs assessment but is satisfied that it needs to immediately modify the existing document in order to prevent significant detriment to the provision of pharmaceutical services.*

### Decision to issue a PNA supplementary statement and gap identification

In accordance with the guidance relating to the closure of a Pharmacy within an area of deprivation North Somerset's H&WB / PNA Steering group should consider that, if when the PNA was written, the St. Andrews Parade pharmacy had not been there would it have been identified as a gap in the provision of pharmaceutical services. There are a number of considerations that the H&WB may take into account when making a decision if there would have been a gap in pharmaceutical service provision on the Bournville estate, had St. Andrews parade not been open at the time of the PNA publication. This includes, population health and wellbeing, demographic, economic, and geographic factors, and access to alternative pharmacy provision.

### PNA, Population health and access to pharmacy provision

#### North Somerset PNA (2022-2025)

At the time of publication analysis for the whole of North Somerset showed that 84.4% of the population were within 1.6km (1 mile) or 20-minute walk of a community pharmacy. Almost the entire population (99.2%) was within a 10 minute average peak drive time of a pharmacy. 90.3% percent of the population were within a 5

<sup>4</sup> North Somerset Council (2021) North Somerset Pharmaceutical Needs Assessment 2022-25. Online: <https://n-somerset.gov.uk/sites/default/files/2022-09/pharmaceutical%20needs%20assessment%202022-25.pdf>

<sup>5</sup> North Somerset Council (2020) PNA Steering Group Terms of reference. Unpublished.

minute average peak drive time to a pharmacy. More than three quarters of the population were within a ten minute journey by public transport of a pharmacy, with 98.5% of the population within a 30 minute public transport journey time.

Access was similar when analysed by localities, with all having good drive time and public transport access times. There was generally good pharmacy coverage after 5pm and at weekends, but with some scope for improvements, particularly in rural areas.

At the time of writing there was generally good pharmacy provision in North Somerset. Weston and Worle PNA locality had a higher level of pharmacies per 100,000 population than the North Somerset and South West averages, but a level similar to the England average.

### Population health on Bournville Estate and South Ward

The health and wellbeing of the local population is likely to impact on the need for above average access for pharmaceutical and other health services, and at the same time limit accessibility to such services within a wider geographic area. The Bournville Estate (where St. Andrews pharmacy is located) is in IMD decile 1, meaning it is in the 10% most deprived areas in England<sup>6</sup> (see ).

Life expectancy in South Ward is below the North Somerset average and the second worst in the Authority area (76.7 years, NS 80.3 years), with healthy life expectancy and years lived in poor health, well below the North Somerset average. The standard mortality ratio (SMR) is significantly higher than the North Somerset average (148.8, NS 94.7). With deaths from all causes, for all ages significantly higher than the North Somerset average (SMR 166.5, NS 93.8), this same pattern is repeated for cancer deaths, preventable deaths, deaths from circulatory disease, coronary heart disease, respiratory diseases, and stroke<sup>7</sup>.

The population of the Bournville Estate is mainly served by the Horizon Healthcare Centre, which is located opposite the Boots pharmacy on St. Andrew's Parade. The practice has the highest deprivation score in North Somerset<sup>8</sup>. The registered population has high rates of diabetes, smoking, obesity, and mental health conditions (other than dementia) and respiratory conditions such as COPD and asthma.

As defined in the Equalities Act, the area has a population with the second highest level of disability, that limit day-to-day activities a lot, in North Somerset (11.6%; compared to 7.6% across North Somerset). The proportion of South Ward residents reported as living with a limiting long-term illness or disability is 24.3% (NS 19.1%).

<sup>6</sup> ONS (2019) English indices of deprivation 2019. Online: [www.gov.uk/government/statistics/english-indices-of-deprivation-2019](http://www.gov.uk/government/statistics/english-indices-of-deprivation-2019)

<sup>7</sup> North Somerset Council JSNA ( ) Ward Profiles. Weston-super-Mare South Ward. Online: <https://n-somerset.gov.uk/council-democracy/north-somerset-insight-data-statistics/joint-strategic-needs-assessment-jsna-health-social-care>

<sup>8</sup> OHID (2019) National General Practice Profiles, IMD 2019.



The area has a significant population of very vulnerable groups that have very limited means of accessing other pharmacies nearby.

Demographic, economic, and geographic factors are likely to impact on individuals need for, and ability to access pharmacy services. There are higher levels of household overcrowding in the area (7.5%, NS 4.6%), and households experiencing fuel poverty (17.4% NS 9.3%). The number of families affected by absolute (23.1%, NS 10.4%) and relative (33.2%, NS 13.8%) poverty are significantly higher than the North Somerset averages. There are higher proportions of unemployed people (6.4%, NS 2.4%) and people with no qualifications (24.3%, NS 14.9%) living in the area.

A third of households in this ward do not have access to a car or van (Weston-super-Mare South 34%, North Somerset average 15%<sup>9</sup>). The X1 bus services is the primary Bus route that travels through the estate<sup>10</sup>. The route of this service takes it past one pharmacy within 1 mile (Jhoots 37 Whitecross Rd, Weston-super-Mare BS23 1EN). There are other bus routes that travel around the fringes of South Ward, including the 7, 62 and 125. However, each would require walking a distance similar to those described for the next nearest pharmacies (see Figure 2). The Bournville estate is also bisected by 2 main railway lines, meaning there are a limited number of road and footway access points to and from the estate, resulting in increased travel times and limited route options for people with limiting conditions.

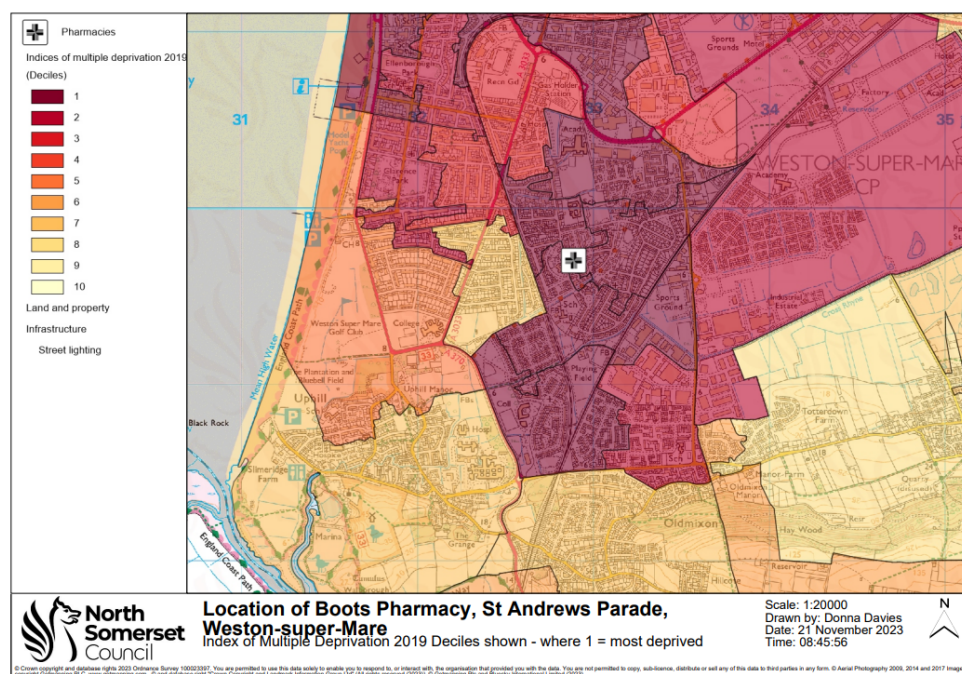


Figure 1: Location of Boots, St Andrew's Parade and social deprivation (IMD2019)

<sup>9</sup> ONS (2023) Car or van availability. Census 2021. Online: <https://www.ons.gov.uk/datasets/TS045/editions/2021/versions/1>

<sup>10</sup> Travel West (2024) Service X1. Operated by First in Bristol Bath & the West. Online: <https://journeyplanner.travelwest.info/routes/service/X1/39-X1-%25-y10-2/3>

### Population pharmacy use on Bournville Estate

The relative majority (44%) of the patients registered at Horizon Healthcare use the Boots pharmacy on St Andrew’s Parade to get their prescribed medication. Fourteen percent use Boots on Monkton Avenue on the Oldmixon Estate, and a further 9% use Milton Pharmacy. The rest of the patients use a variety of local, online and distance-selling pharmacies<sup>11</sup>. The majority (75%) of prescriptions that Boots on St. Andrew’s Parade dispense, originate from Horizon Health Centre, with 7% from Graham Road Surgery (has its own pharmacy), and 6 % from 168 Medical (also has pharmacy).

Data and information in relation to the use of public health services delivered in Boots St. Andrews pharmacy is summarised here:

Substance misuse services	There are currently 17 clients accessing opiate substitution therapy, often daily; usually 4 of these clients which require additional supervised consumption 5-7 times a week; in the past three years, around 300 packs of needles per year were provided for injecting drug users, indicating a significant need. This vulnerable population is unlikely to travel to other pharmacies daily and there is a risk that they will stop engaging with treatment and safer injection practices
Smoking cessation services	Most affected is the handling of Community NRT vouchers provided by the specialist smoking cessation service. This area has a particularly high rate of high-risk smokers, experiencing significant health inequalities and higher premature mortality rates. Smoking remains the single biggest preventable cause of premature mortality and reducing smoking has been set as a key target of the BNSSG ICS.
Emergency hormonal contraception (EHC)	This pharmacy provides a proportionately high level of EHC, around 50% more than the large Tudor Lodge pharmacy and a third more than Boots at Oldmixon. A third of consultations are for girls under the age of 18 with three times as many teenagers seen as in the other two pharmacies. Restricted access to emergency contraception is likely to lead to more unwanted pregnancies and/or terminations.

<sup>11</sup> NHSBA (Sept 2023) Dispensing data. Unpublished data.

Mitigations to ensure continued access to Public Health services delivered through pharmacies for the Bournville population have been put in place. Commissioners are working with other pharmacies and service providers to support clients to access medication. Although it is recognised that these mitigation changes may be disruptive and could impact on individual outcomes. We will keep mitigation measures under review for potential impacts.

### Alternative pharmacy provision

The nearest, most accessible pharmacy to St. Andrews Parade, is on the Oldmixon Estate (Boots Monkton Avenue). This location is a 23 minute walk away. This pharmacy has already indicated capacity issues that would limit its ability to take on more clients.

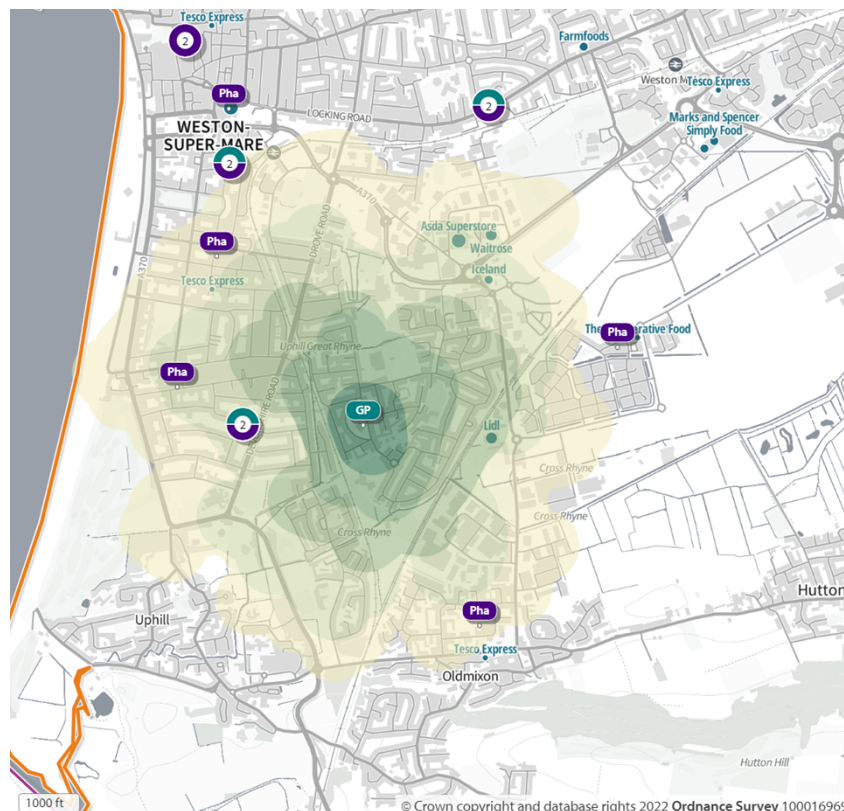


Figure 2: Pharmacies within 1 mile (1.6km) walking distance of the Horizon Healthcare Centre after closure of Boots, St Andrew's Parade

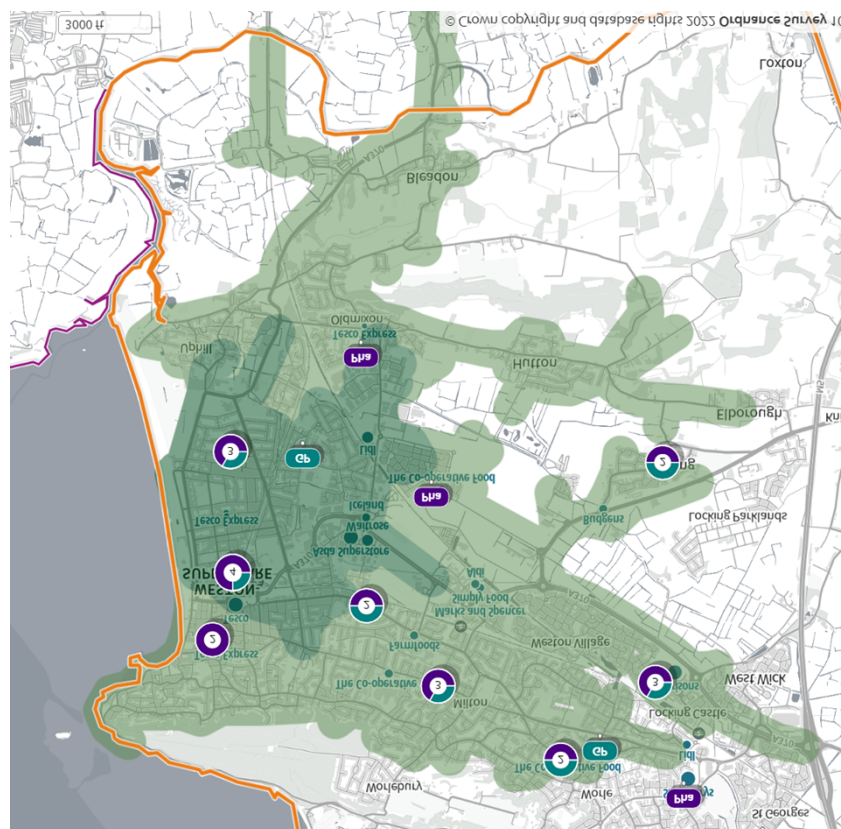


Figure 3: Pharmacies within 10 minute driving of the Horizon Healthcare Centre after closure of Boots, St Andrew's Parade.

### Summary and gap identification

Data and information in relation to local pharmacy provision, population health and wellbeing needs, demographic, economic and geographic factors, indicates that the H&WB could consider that there would have been a gap in pharmaceutical service provision on the Bournville estate, had St. Andrews parade not been open at the time of the PNA publication. The H&WB should consider:

- The local population has significant underlying health and wellbeing needs that will increase need for pharmacy services.
- The same health and wellbeing needs will impact on the population's ability to access pharmacy services in a wider area (mobility, ability, and capacity).
- Health literacy of local population may impact ability that individuals have to access, understand, process, and use information in relation to pharmacy services needed to make decisions about their health and wellbeing.
- Economic factors may restrict travel choice for individuals.
- Transport and travel options are limited for those without access to a car, or can't afford to use the bus. Public transport options are also limited in this area.
- Economic factors may restrict time availability for additional travel.
- Capacity issues in neighbouring pharmacies that could limit taking on more clients.



- Vulnerable groups living on the estate that have very limited means of accessing other pharmacies nearby.

### **Recommendations**

Based on the summary of relevant information and gap identification it is recommended that:

1. The Health and Wellbeing Board, support the decision to issue a supplementary statement to the pharmaceutical needs assessment following the closure of Boots Pharmacy on St. Andrews Parade, Weston-super-Mare.
2. The Health and Wellbeing Board issue a supportive response to the application to open a new pharmacy on St. Andrews Parade and delegates the final draft of a letter to the Health and Wellbeing Board Chair with support from the Director of Public Health and Regulatory Services.

### **Authors**

Samuel Hayward, Consultant in Public health, North Somerset Council  
Sandra Shcherba, Public Health Researcher, North Somerset Council